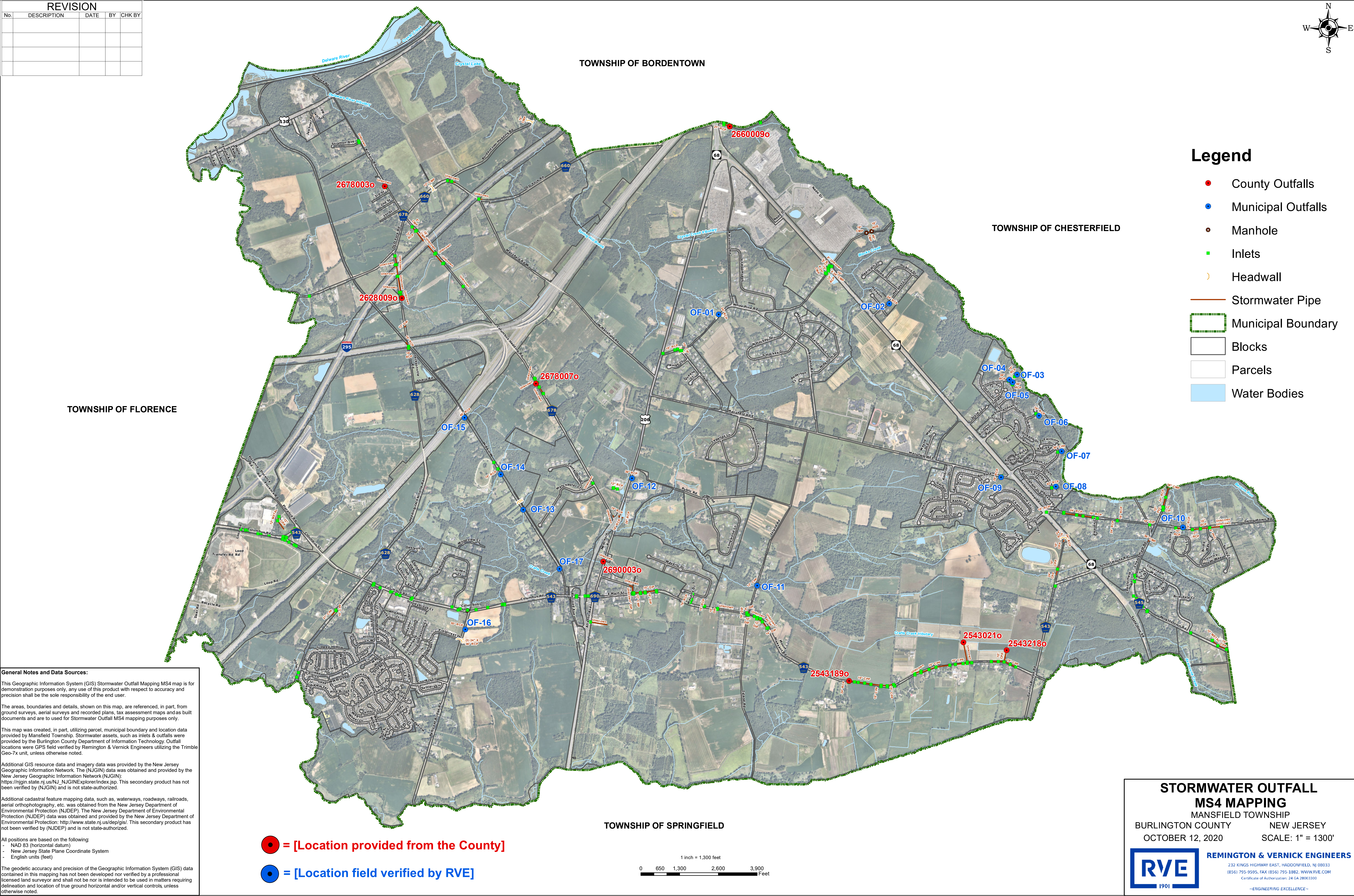
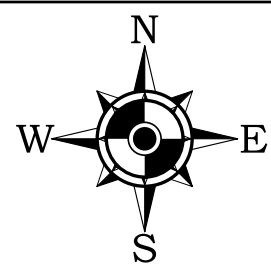


REVISION				
No.	DESCRIPTION	DATE	BY	CHK BY



**General Notes and Data Sources:**

This Geographic Information System (GIS) Stormwater Outfall Mapping MS4 map is for demonstration purposes only, any use of this product with respect to accuracy and precision shall be the sole responsibility of the end user.

The areas, boundaries and details, shown on this map, are referenced, in part, from ground surveys, aerial surveys and recorded plans, tax assessment maps and as built documents and are to be used for Stormwater Outfall MS4 mapping purposes only.

This map was created, in part, utilizing parcel, municipal boundary and location data provided by Mansfield Township. Stormwater assets, such as inlets & outfalls were provided by the Burlington County Department of Information Technology. Outfall locations were GPS field verified by Remington & Vernick Engineers utilizing the Trimble Geo-7x unit, unless otherwise noted.

Additional GIS resource data and imagery data was provided by the New Jersey Geographic Information Network. The (NJGIN) data was obtained and provided by the New Jersey Geographic Information Network (NJGIN): [https://njgin.state.nj.us/NJ\\_NJGINExplorer/index.jsp](https://njgin.state.nj.us/NJ_NJGINExplorer/index.jsp). This secondary product has not been verified by (NJGIN) and is not state-authorized.

Additional cadastral feature mapping data, such as, waterways, roadways, railroads, aerial orthophotography, etc. was obtained from the New Jersey Department of Environmental Protection (NJDEP). The New Jersey Department of Environmental Protection (NJDEP) data was obtained and provided by the New Jersey Department of Environmental Protection: <http://www.state.nj.us/dep/gis/>. This secondary product has not been verified by (NJDEP) and is not state-authorized.

All positions are based on the following:

- NAD 83 (horizontal datum)
- New Jersey State Plane Coordinate System
- English units (feet)

The geodetic accuracy and precision of the Geographic Information System (GIS) data contained in this mapping has not been developed nor verified by a professional licensed land surveyor and shall not be nor is intended to be used in matters requiring delineation and location of true ground horizontal and/or vertical controls, unless otherwise noted.

 = [Location provided from the County]


 = [Location field verified by RVE]

**STORMWATER OUTFALL  
MS4 MAPPING**

MANSFIELD TOWNSHIP

BURLINGTON COUNTYNEW JERSEY

OCTOBER 12, 2020SCALE: 1" = 1300'



**REMINGTON & VERNICK ENGINEERS**

232 KINGS HIGHWAY EAST, HADDONFIELD, NJ 08033  
(856) 795-9595, FAX (856) 795-1862, WWW.RVE.COM  
Certificate of Authorization: 24 GA 28003300

—ENGINEERING EXCELLENCE—